

Lockin' Your Moment

2026 LocknLock
Cookware



Content

Our Story	4
What's New	6
LocknLock Cookware	8



SPECIAL	10
SUIT SAGE	12
SUIT BRIC	16
SUIT	20
DECORE	24
HARD & LIGHT PRO	30
SUIT STAINLESS	34
SUIT MELLOW	38
ROLLING POP	42

ESSENTIAL	46
SOMA	48





Our Story

We provide reassurance technology trusted for everyday life.

We are your companion, always close to your everyday life, bringing change to your world. The warm aroma from the kitchen, the excitement of starting something new, and every moment filled with laughter when family and friends gather – we are always there with you. Every product and service we offer is deeply connected to your daily life, enriching it in every way. We are always the most trustworthy choice for you. With unwavering quality and a warm heart, we will stay by your side for the long haul. Together, we will open the door to better days, every day, right by your side.

Brand Core Value

LocknLock resolves customer distrust, discomfort, and anxiety with a warm and inclusive approach

Confidence

Turning distrust into trust with absolute reliability

Comfort

Providing comfort by resolving everyday inconveniences

Constancy

Easing anxiety through lasting durability

What's New?



HARD & LIGHT Pro
SPECIAL



Suit BRIC
SPECIAL



Rolling Pop
SPECIAL



Cookware

From Start to Finish, Make Cooking a Joy

LocknLock cookware brings ease and delight to every moment in the kitchen. With even heat distribution, ergonomic design, and safe nonstick coatings, our pots, pans, and kitchen tools enhance not just the joy of cooking — but also the quality of every dish. Whether you're preparing everyday meals or trying something new, LocknLock is your trusted kitchen companion, adding warmth, comfort, and creativity to your culinary life.

Special

Essential





Special

The Specials — For a Kitchen with Personality

From Home Restaurant to Design and Master Series, our special lines combine aesthetic charm with performance. With every detail refined, they bring a sense of occasion to everyday moments, elevating your kitchen experience in both style and function.

Suit SAGE



Capacity 18cm, 20cm, 22cm, 24cm, 26cm

Materials **Pot**
 Body- Aluminum, ceramic coating
 Lid - Heat - resistant Glass , silicone rubber , Stainless steel, Polyamide

Frying pan
 Body- Aluminum , ceramic coating

Functions Induction Safe
 Electric Range Safe
 Gas Range Safe
 Highlight Safe
 No Dishwasher
 Oil Locking
 Ceramic Coating



1. 9H Ceramic Hardness
2. World's 1st Kitchen Ceramic Coating Technology : KFCC Coating
3. Superior Non-stick Surface
4. PFAS Free Ceramic
5. Heat Safe Ceramic Layer

Healthy Ceramic Powerful Performance



22cm



CAW2274IH
SIZE 376x220x82mm
CTN 8 PCS / 0.046 CBM

18cm



CAS1874IH SIZE 338x180x125mm
CTN 6 PCS / 0.054 CBM



Heat Safe Ceramic Layer

20cm



CAC2074IH SIZE 308x200x129mm
CTN 6 PCS / 0.053 CBM

22cm



CAC2274IH SIZE 328x220x135mm
CTN 4 PCS / 0.043 CBM

24cm



CAF2474IH SIZE 411x240x63mm
CTN 8 PCS / 0.043 CBM

26cm



CAF2674IH SIZE 431x260x65mm
CTN 8 PCS / 0.048 CBM



PFAS Free Ceramic

24cm



CAL2474IH SIZE 348x240x115mm
CTN 4 PCS / 0.041 CBM

Suit BRIC



Capacity 18cm, 20cm, 22cm, 24cm, 26cm

Materials Body - Aluminum (ILAC ceramic coating)
Pan Body - Aluminum (ILAC premium non-stick coating)

Functions Induction Safe
Electric Range Safe
Gas Range Safe
Highlight Safe
No Dishwasher
Oil Locking



1. Suit Brick — interior cookware that fits perfectly on induction cooktops
2. Equipped with an Oil Locking System
3. Durable ceramic-coated pot that resists discoloration
4. Optimal thickness minimizes base deformation
5. Stackable design for efficient kitchen storage

Fast, Healthy Cooking
with Minimal Oil.
Smart Design That Sticks Perfectly
to Induction.



18cm



CAS1855IH

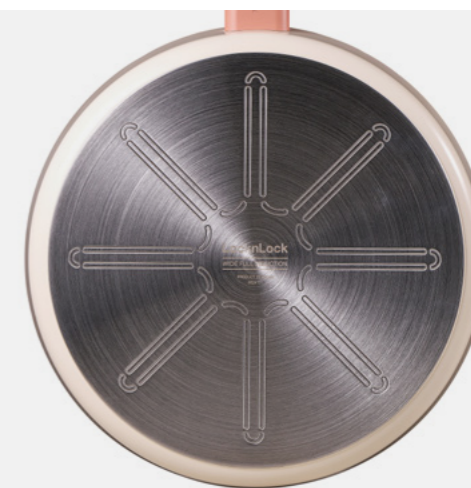
SIZE 335x180x120mm
CTN 6 PCS / 0.063 CBM

24cm



CAL2455IH

SIZE 365x240x117mm
CTN 4 PCS / 0.049 CBM



Free from 183 types
of perfluorinated compounds (PFCs)

22cm



CAW2255IH

SIZE 375x220x75mm
CTN 8 PCS / 0.044 CBM

24cm



CAF2455IH

SIZE 410x247x55mm
CTN 8 PCS / 0.039 CBM

20cm



CAC2055IH

SIZE 325x200x130mm
CTN 6 PCS / 0.063 CBM

22cm



CAC2255IH

SIZE 345x220x137mm
CTN 4 PCS / 0.049 CBM



Knob structure allows
the lid to stand upright

26cm



CAF2655IH

SIZE 430x267x56mm
CTN 8 PCS / 0.045 CBM

Suit



Capacity 18cm, 20cm, 22cm 24cm, 26cm

Materials Body - Aluminum, ceramic coating (pot), non-stick coating (frying pan)
Handle - Heat-resistant glass, silicone
Lid - Bakelite with rubber coating

Functions Induction Safe
Electric Range Safe
Gas Range Safe
Highlight Safe



1. Stylish cookware designed to sit perfectly on induction cooktops
2. Fast cooking in just about 2 minutes with True Wide Full Induction base technology
3. Optimal thickness ensures safe cooking with no base deformation or slipping
4. Sleek, soft-touch handle for extra comfort and convenience — no unnecessary length
5. Durable ceramic-coated pots that resist discoloration & non-stick coated pans that prevent food from sticking

Full Induction Base for Faster, More Efficient Cooking.



reddot winner 2022



22cm



CSU1225

SIZE 360x227x74mm
CTN 6 PCS / 0.022 CBM

18cm



CSU1181

SIZE 320x188x121mm
CTN 6 PCS / 0.049 CBM

20cm



CSU1202

SIZE 297x208x127mm
CTN 6 PCS / 0.05 CBM

22cm



CSU1222

SIZE 317x228x132mm
CTN 6 PCS / 0.06 CBM

24cm



CSU1243

SIZE 396x247x54mm
CTN 6 PCS / 0.024 CBM

26cm



CSU1263

SIZE 416x267x54mm
CTN 6 PCS / 0.028 CBM

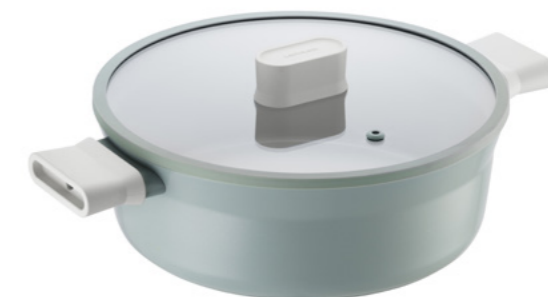


24cm



Fast cooking in just about 2 minutes with
True Wide Full Induction base technology

24cm



CSU1242

SIZE 337x248x112mm
CTN 4 PCS / 0.038CBM

Decore



1. Personalized cookware with color options by item to match individual tastes
2. Retro-inspired, stylish cookware that elevates your tabletop presentation
3. Enhanced induction technology for improved heat efficiency and faster cooking
4. Purpose-specific coating applied for optimal performance in pots and pans
5. Comfortable handle designed with enhanced safety in mind

Retro Charm, Modern Vibe -
Brighten Up Your Kitchen in Style.



14cm



LDE1142

SIZE 300x160x110mm
CTN 6 PCS / 0.039 CBM

20cm



LDE1204IH

SIZE 328x214x223mm
CTN 4 PCS / 0.07 CBM

20cm



LDE1207IH

SIZE 367x254x115mm
CTN 6 PCS / 0.05 CBM

24cm



LDE1244IH

SIZE 327x212x118mm
CTN 6 PCS / 0.065 CBM

18cm



LDE1181IH

SIZE 380x196x146mm
CTN 6 PCS / 0.065 CBM

20cm



LDE1202IH

SIZE 327x215x143mm
CTN 4 PCS / 0.046 CBM



Comfortable handle designed with enhanced safety in mind

18cm




LDE1186IH

SIZE 340x138x55mm
CTN 12 PCS / 0.051 CBM



24cm



LDE1243IH SIZE 458x246x84mm
CTN 8 PCS / 0.071 CBM



18cm




LDE1182IH SIZE 307x195x164mm
CTN 6 PCS / 0.065 CBM

26cm




LDE1263IH SIZE 479x266x85mm
CTN 8 PCS / 0.085 CBM

22cm



LDE1225IH
SIZE 226x415x90mm
CTN 8 PCS / 0.069 CBM



Purpose-specific coating applied for optimal performance in pots and pans

28cm



LDE1283IH SIZE 450x286x86mm
CTN 8 PCS / 0.094 CBM

22cm



LDE1222IH SIZE 347x232x158mm
CTN 4 PCS / 0.051 CBM

24cm



LDE1245IH SIZE 435x245x90mm
CTN 6 PCS / 0.068 CBM

Hard & Light Pro



Capacity 24cm, 26cm, 28cm, 30cm

Materials Body - Aluminum
(Fluororesin coating)

Functions Induction Safe
Electric Range Safe
Gas Range Safe
Highlight Safe



1. Powerful coating performance returns with the upgraded F7
2. Exceptional durability with hard anodizing
3. Lighter weight and a wider cooking surface
4. Stylish and ergonomic handle that fits comfortably in one hand
5. Excellent heat conductivity and retention for faster cooking

Hard Anodized
for Exceptional Durability.
Light for Effortless Cooking.



24cm



CAF2458IH

SIZE 275x455x285mm
CTN 6 PCS / 0.036 CBM

30cm



CAF3058IH

SIZE 335x490x300mm
CTN 6 PCS / 0.049 CBM



Stylish and ergonomic handle
that fits comfortably in one hand

26cm



CAW2658IH

SIZE 295x455x325mm
CTN 6 PCS / 0.044 CBM



Excellent heat conductivity
and retention for faster cooking

26cm



CAF2658IH

SIZE 295x495x295mm
CTN 6 PCS / 0.04 CBM

28cm



CAF2858IH

SIZE 215x470x300mm
CTN 6 PCS / 0.044CBM

28cm



CAW2858IH

SIZE 315x475x325mm
CTN 6 PCS / 0.049 CBM



Winner of two major design awards —
globally recognized style

Suit Stainless



- Capacity** 20cm, 24cm, 28cm
- Materials** Body - Stainless steel 304 (Fluororesin coating)
Handle - Stainless steel 304 (Fluororesin coating)
- Functions** Induction Safe
Electric Range Safe
Gas Range Safe
Highlight Safe
Oil Locking



1. Safe and easy-to-use stainless steel 304 frying pan
2. Enjoy silky-smooth cooking with premium coating from Swiss ILAG
3. Stainless steel frying pan with Oil Balance System — the ultimate induction pan technology
4. Concave press and Oil Locking tech prevent oil from spreading and base from lifting
5. Triple-layered base enhances heat conductivity and retention

Oil Balance System
for Healthier,
Tastier Cooking
Every Time.



reddot winner 2024



20cm



CSF2020

SIZE 384x200x41mm
CTN 4 PCS / 0.023 CBM

24cm



CSW2420

SIZE 425x240x72mm
CTN 4 PCS / 0.042 CBM

24cm



CSF2420

SIZE 425x240x50mm
CTN 4 PCS / 0.031 CBM

28cm



CSF2820

SIZE 464x280x53mm
CTN 4 PCS / 0.04 CBM

28cm



CSW2820

SIZE 464x280x83mm
CTN 4 PCS / 0.058 CBM



Triple-layered base enhances
heat conductivity and retention

Suit Mellow



- Capacity** 12cm, 14cm, 18cm, 20cm, 1.5L
- Materials** Body - Enamel-coated steel plate
Handle - Wood
Lid - Square Canister Lid
Polyethylene (PE)
- Functions** Induction Safe
Gas Range Safe
Highlight Safe
No Microwave



1. Enamel pot series with a warm and emotional design
2. Hygienic and safe material with a glass-coated finish
3. Practical set for all generations and various cooking needs
4. oils quickly and feels light — the perfect everyday pot
5. Compatible with various heat sources

Timeless Enamel.
Thoughtful Design.
A Pot That Balances
Beauty and Function.



reddot winner 2024
best of the best



12cm



CSU2121

SIZE 268x142x90mm
CTN 8 PCS / 0.04 CBM

20cm



CSU2202

SIZE 307x219x130mm
CTN 6 PCS / 0.056 CBM

14cm



CSU2141

SIZE 307x163x95mm
CTN 8 PCS / 0.055 CBM

18cm



CSU2181

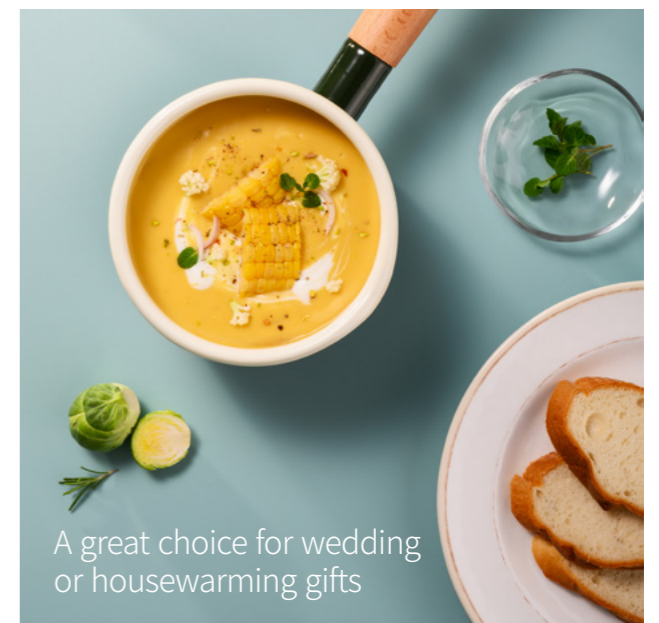
SIZE 349x199x115mm
CTN 6 PCS / 0.059 CBM

1.5L



CSU2159

SIZE 190x147x117mm
CTN 6 PCS / 0.039 CBM



A great choice for wedding
or housewarming gifts

Rolling Pop



- Capacity** 16cm, 18cm, 22cm
- Materials** Body - Aluminum
(Ceramic / Ceramic coating)
Knob, Handle - Bakelite
Pan Body - Aluminum
(Fluororesin / Ceramic coating)
- Functions** Induction Safe
Electric Range Safe
Gas Range Safe
Highlight Safe



1. Rolling Pop makes even ordinary meals feel special and brings joy to your precious kitchen space
2. A unique design that brightens up your everyday routine, Charming and emotionally uplifting colors
3. Compact size perfect for 1-2 servings
4. Optimized coating for both pots and pans
5. Soft rubber-coated handle for a comfortable grip

Sized for One or Two.
Styled for Small-Space Cooking.



16cm



LOP1161IH

SIZE 291x166x133mm
CTN 8 PCS / 0.051 CBM

18cm



LOP1182IH

SIZE 280x186x135mm
CTN 6 PCS / 0.045 CBM

22cm



LOP1225IH

SIZE 346x226x63mm
CTN 8 PCS / 0.063 CBM



Charming and emotionally uplifting colors



Essential

The Essentials, Perfected — For Everyday Cooking

Our basic lineup is optimized for daily use, with lightweight construction and well-balanced heat conduction that make cooking easy for anyone.

Soma



Capacity 20cm, 24cm, 26cm, 28cm, 30cm

Materials Body - Pressed aluminum (Titanium coating [interior], Fluororesin coating [exterior])
Handle - Aluminum (bracket), Bakelite

Functions Induction Safe
Electric Range Safe
Gas Range Safe
Highlight Safe



1. Cook cleanly without spills thanks to the deep and wide body design
2. Durable coating resists peeling and prevents sticking over time
3. Upgraded non-stick exterior makes cleanup easier than ever
4. Lightweight design and comfortable handle reduce strain on your wrist
5. High heat efficiency on induction cooktops allows faster cooking

Wide, Deep,
Wonderfully Easy -
Designed for Beginners,
Loved by All.



20cm



LMH2203IH
SIZE 315x420x195mm
CTN 8 PCS / 0.026 CBM

28cm



LMH2283IH SIZE 369x586x183mm
CTN 6 PCS / 0.04 CBM

30cm



LMH2303IH SIZE 406x630x187mm
CTN 6 PCS / 0.048 CBM

26cm



LMH2265IH SIZE 360x541x196mm
CTN 6 PCS / 0.038 CBM

28cm



LMH2285IH SIZE 369x586x201mm
CTN 6 PCS / 0.043 CBM

24cm



LMH2243IH SIZE 320x520x206mm
CTN 8 PCS / 0.034 CBM

26cm



LMH2263IH SIZE 360x541x210mm
CTN 8 PCS / 0.041 CBM

30cm



LMH2305IH SIZE 474x590x216mm
CTN 6 PCS / 0.06 CBM



Lightweight design and comfortable handle reduce strain on your wrist



www.LocknLock.com